

Sheet metal edges are sharp. Protection and care should be used when handling.



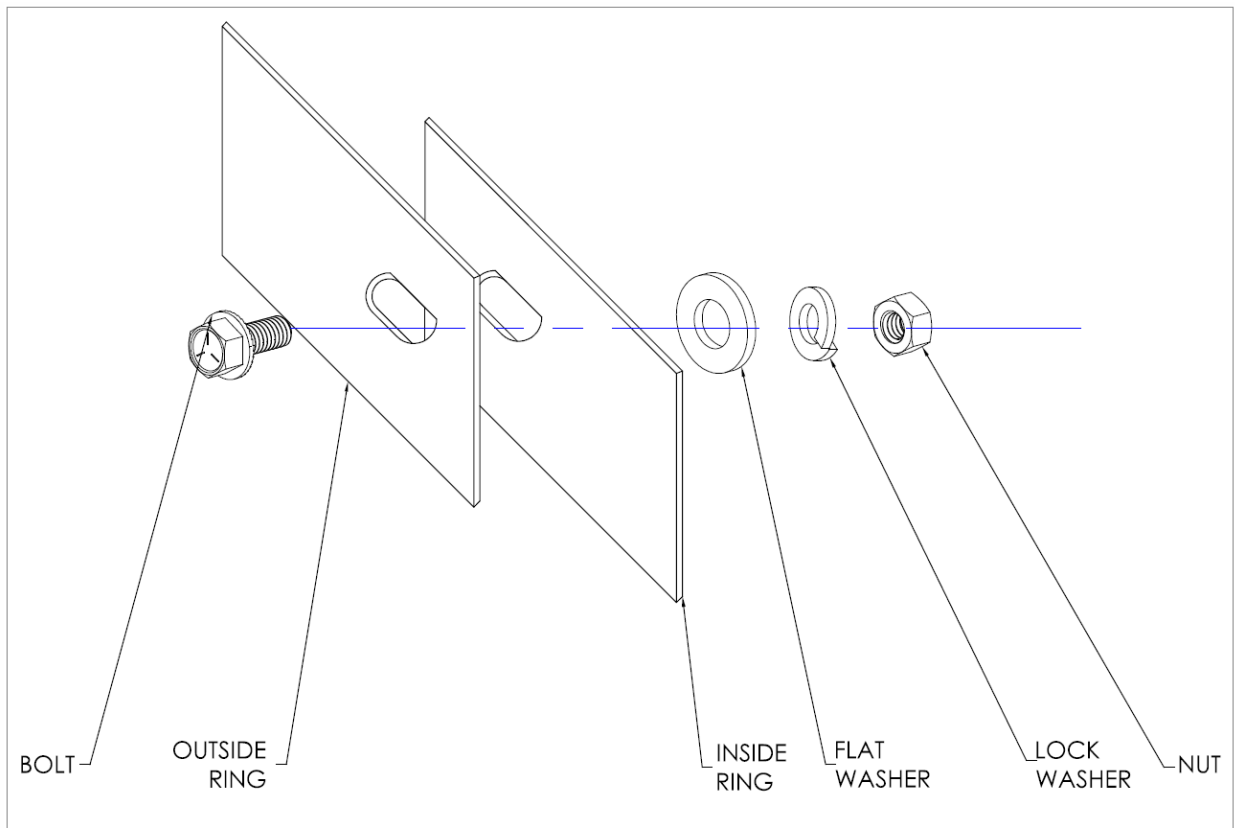
FIRE RING ASSEMBLY INSTRUCTIONS

24" – 60" Diameter

The hardware bag should contain: bolts, flat washers, lock washers, and nuts.

24" Ring = 6 pieces each	36" Ring = 9 pieces each
48" Ring = 12 pieces each	60" Ring = 15 pieces each

Tools needed: TWO Wrenches and/or drive wrench with socket **SIZE 1/2" HEX (.500") [13mm]**



THIS DRAWING IS THE PROPERTY OF TURNER INDUSTRIES, INC. AND SHALL NOT BE COPIED OR ITS CONTENTS DISCLOSED TO OUTSIDE PARTIES WITHOUT WRITTEN CONSENT OF TURNER INDUSTRIES, INC. © 2016	UNLESS OTHERWISE SPECIFIED, DIMENSIONS ARE IN INCHES. TOLERANCES UNLESS SPECIFIED: .X ± .060 .XX ± .030 .XXX ± .010 ANGLE ± 1°	TURNER INDUSTRIES, INC. 12028 COUNTY HWY B CHIPPEWA FALLS, WI 54729 PHONE: 715-288-6480 FAX: 715-288-6956 www.turnerindustriesinc.com	TITLE ASSEMBLY INSTRUCTIONS -FIRE RINGS	REV A
	CONFORMS TO ASME Y14.5-2009 THIRD ANGLE PROJECTION	MATERIAL MISC HARDWARE	FINISH N/A	SHEET SHEET 1 OF 1
	DRAWN BY G. LEMBKE	DATE 12-JULY-2016		

Sheet metal edges are sharp. Protection and care should be used when handling.

Sheet metal edges are sharp. Protection and care should be used when handling.

Assembly of the fire ring is straight forward. Align panels, attach hardware as shown and tighten. The bolts do not require a washer in front since anti-vibration flanges are built into the bolts.

This fire ring is built to last many years. For an even longer life, here some things you can do:

- Remove ashes and dirt from fire ring after your fire (Allow ashes to cool completely). Continuous contact with foreign material will speed up the iron oxidation (rust) process.
- When not being used for extended periods or particular seasons (winter), protect fire ring from the elements. Cover or store indoors.
- Painting is an option. If you did not choose the option at purchase, you can paint the fire ring yourself. A high temp (over 1200° F) spray paint for grills or engine parts is recommended. High temp paint can be purchased at most hardware stores, automotive part stores, and department stores. Follow paint manufacturer's directions carefully.
- Extreme temperature fluctuations may cause the hardware to become loose. Periodically check and tighten the hardware. If hardware needs to be replaced, use **5/16"-18 Threaded Grade 5** bolts and nuts. *Due to the high heat, stainless hardware would be subject to the same corrosion as mild steel when not in use.*

We can create custom and personalized fire rings and metal art!

Contact us for more information and competitive quotes.

www.turnerindustriesinc.com



Thank you for your purchase!
Please contact us if you have any questions or complaints! It is our pleasure to serve you.

12028 COUNTY HIGHWAY B
CHIPPEWA FALLS, WI 54729

PHONE: (715)-288-6480

FAX: (715)-288-6956

EMAIL: sales@turnerindustriesinc.com

DISCLAIMER: Due to the nature of sheet metal fabrication using a plasma cutter the products may come with some imperfections. This type of fabrication gives a unique and individual charm. Sometimes burrs and slag may need to be ground down. This is a normal occurrence with sheet metal fabrication and is no way a fault. Paint is an option, otherwise the steel will be finished raw and will naturally oxidize/ rust. This is part of the rustic, natural charm of our custom fire rings. If you have any hesitations please contact us for information.

Sheet metal edges are sharp. Protection and care should be used when handling.